

MP135-MP150E

Since 1994 Marapco Generating Sets have provided reliable, dependable and trustworthy power solutions for the global market. Marapco Generating Sets combine quality and performance to deliver a superior product, making Marapco a market leading Generating Set throughout the Middle East, Asia & Africa.

Generator Output Rating at - 50Hz

380-415V	KVA	KW
Prime	135.0	108.0
Standby	150.0	120.0

@ 0.8 p.f.

Generator Output Rating at - 60Hz

480V	KVA	KW
Prime	151.9	121.5
Standby	168.8	135.0

@ 0.8 p.f.

Engine Data

Engine Manufacturer:	Perkins UK
Engine Model:	1106A-70TG1
Number of Cylinders:	6
Cylinder Arrangement:	Vertical In Line
Cycle:	4 Stroke
Bore/Stroke mm (in):	105.0 (4.1) x 133.0 (5.2)
Induction:	Turbo charged & air-to-air Charge cooled
Compression ratio:	18.2:1
Displacement l (cu.in):	7.01 (427.7)

General Data

	Liter	US/Gal
Fuel Tank Capacity:	400.0	105.7
Fuel Tank:	Powder Coated Steel	
Base Frame:	Heavy Duty-Powder Coated	
Control Panel:	Deep Sea Electronics	
Circuit Breaker:	ABB 3 Pole MCB	

Performance

Performance	50Hz		60Hz	
	Engine Speed:	1500	1800	
Gross Engine Power:	kWm	Bhp	kWm	Bhp
Prime:	122.7	164.5	140.5	188.4
Standby:	135.8	182.1	155.4	208.4
Fuel Consumption:	L/Hr	US Gal/Hr	L/Hr	US Gal/Hr
Prime:	30.3	8.0	35.2	9.298
Standby:	33.8	8.9	38.8	10.24

Standard Reference Conditions:

Output ratings are presented at normal conditions of temperature and pressure. This generator set is designed to operate in high ambient temperatures and altitudes.

Please consult your dealer for specific site ratings.

Dimensions and Weights

Length		Width		Height		Dry		Wet	
Millimeter	Inch	Millimeter	Inch	Millimeter	Inch	KG	LB	KG	LB
2653.0	105.6	1000.0	39.4	1670.0	65.7	1725.0	3803.0	1748.0	3845.0

* With Lube Oil

* With Lube Oil & Coolant

Rating Definition

P Prime Rating

These rating are applicable for supplying continuous electrical power (at variable load) in lieu of commercially purchased power. This model can supply 10% overload power for 1 hour in 12 hours.

S Standby Rating

These rating are applicable for supply continuous electrical power (at variable load) in the event of utility power failure. *No overload is permitted on these ratings. The alternator model is peak continuous rated (as defined in ISO 8528-3)*

Air Flow

50Hz

60Hz

M³/min Ft³/min M³/min Ft³/min

Combustion Air Flow: 8.09 286 11.86 419

Exhaust Gas Flow: 22.66 800 29.72 1049.5

**Radiator Cooling:
Air Flow** 182 6427 182 6427

*Cooling system designed to operate in high ambient conditions

Alternator Data

Alternator Manufacturer: Leroy Somer

Alternator Model: LSA44.2 S75 / LSA44.3M8

Number of Bearings: Single (1)

Insulation Class: H

Total Harmonic Content: <2%

Wires: 12

Ingress Protection Rating: IP 23

Excitation System: Shunt

Winding Pitch Code: 2/3 - 6



Diesel Power

Perkins manufactures diesel engines and power solutions to the highest levels of performance and reliability. MARAPCO incorporates this engine throughout their full range.



Leroy Somer is a world leader in the manufacturing of power generation, combining quality with performance to produce a market leading alternator for MARAPCO.



Deep Sea Electronics control modules deliver unrivaled functionality and performance. MARAPCO generating sets use this latest technology to its full potential.

Cooling & Lubrication

50Hz

60Hz

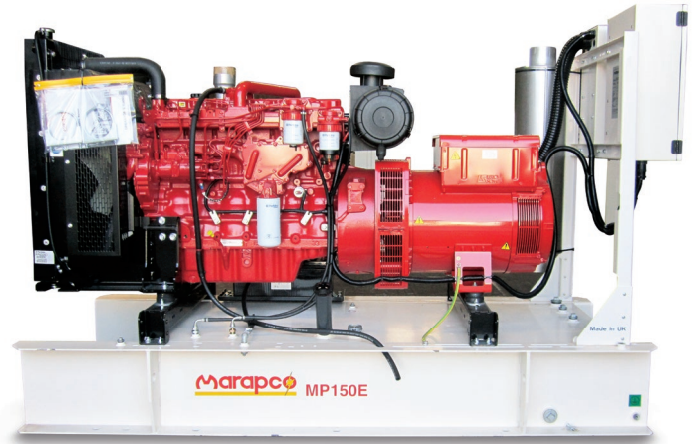
Liter US/Gal Liter US/Gal

Coolant Capacity: 21.0 5.5 21.0 5.5

Lube Oil Capacity: 18.0 4.7 18.0 4.7

°C °F °C °F

Exhaust Temperature: 576 1069 526 979



Other Information

Generating Set Standards

This generating set meets the following standards: ISO8528, BS4999, BS5514, IEC60034, VDE0530

Warranty

This generator is covered against manufacturing and workmanship defects. Kindly refer to warrant statement for more details.

Picture shown in leaflet may include optional accessories

Distributed & Serviced by:

EN-GEN
DIESEL PRODUCTS

+44 (0)1493 738397

sales@engen-diesel.com

www.engen-diesel.com